



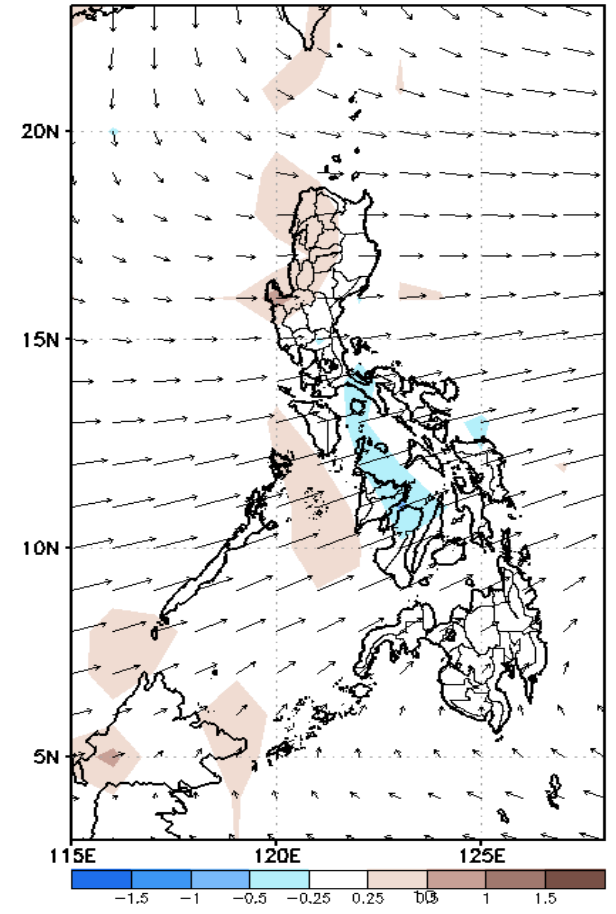
Week 1 & Week 2 Forecast for the Philippines using GEFS Model



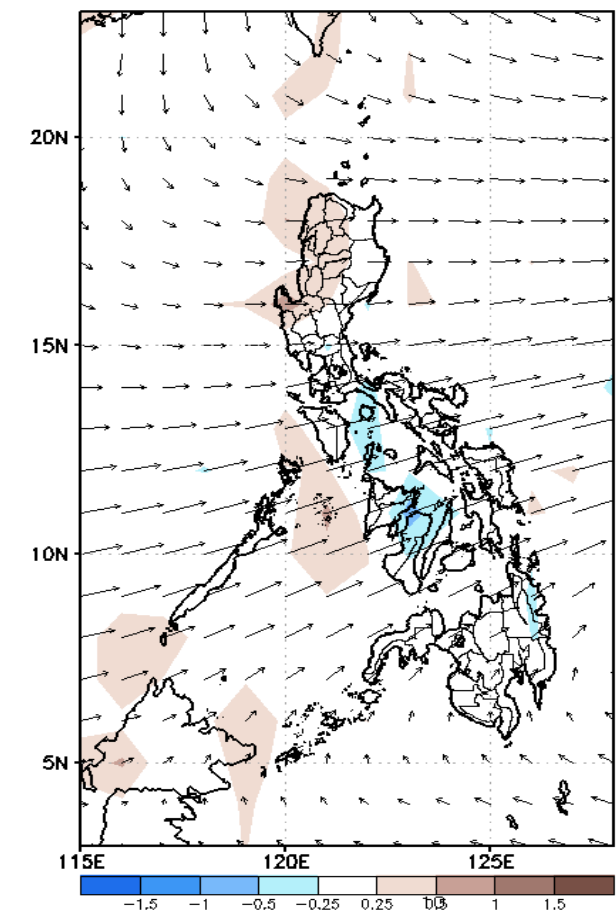
GEFS Week-1 Forecasts: Wind Anomaly Forecast

Week 1: Sep 16-22, 2022

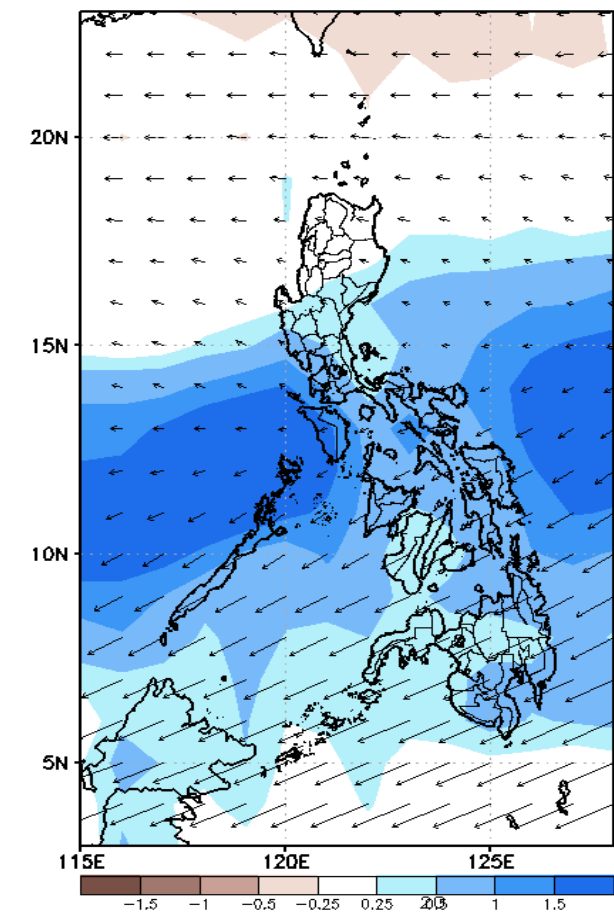
GEFS Week-1 850-hPa Divergence and Wind Anom
Valid: 20220916 - 20220922



GEFS Week-1 700-hPa Divergence and Wind Anomc
Valid: 20220916 - 20220922



GEFS Week-1 200-hPa Divergence and Wind Anoma
Valid: 20220916 - 20220922

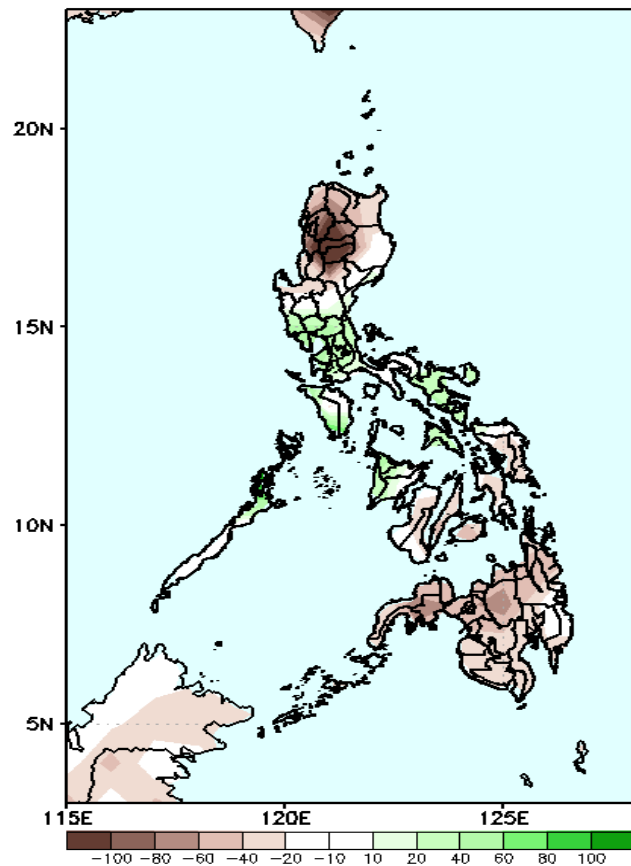


Southwest Monsoon affecting most parts of the country during the forecast period.

Precipitation Anomaly and Exceedance Probability > 25/50 mm

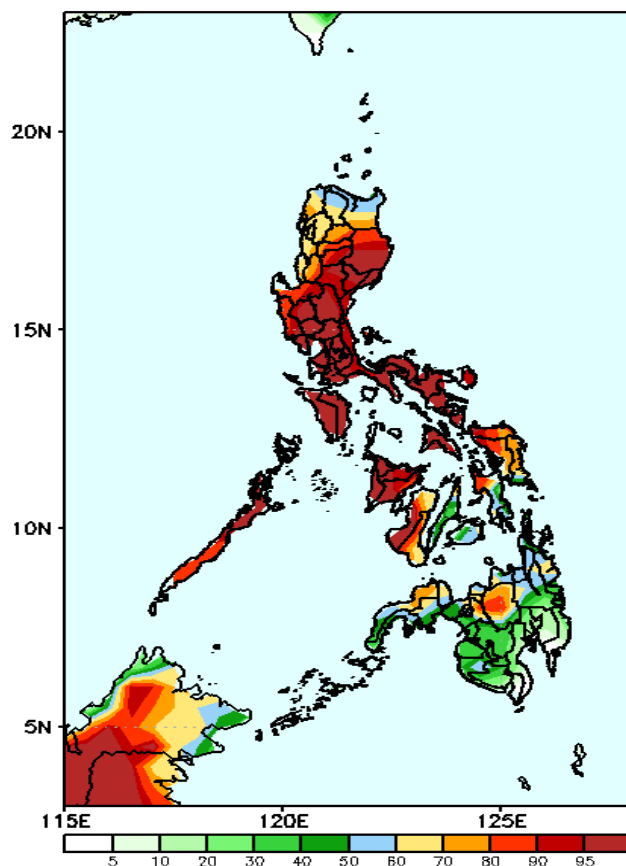
Week 1: Sep 16-22, 2022

GEFS Week-1 Precip Anomaly
Valid: 20220916 - 20220922



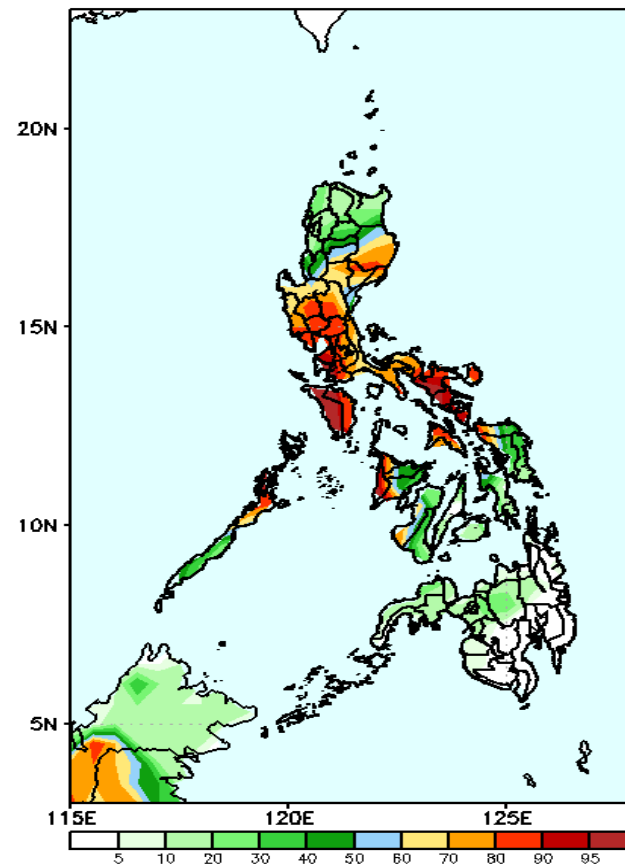
Rainfall deficit of more than 100mm is expected in most parts of Ilocos & Cordillera Region and 40-80mm in Visayas and Mindanao while 20-40mm increase of rainfall for the rest of Luzon and Panay Island during the forecast period.

GEFS Week-1 Exceedance Prob. > 25mm
Valid: 20220916 - 20220922



High probability of rainfall to exceed 25mm in most parts of Luzon, Visayas (except Cebu, Bohol & southern Leyte), Bukidnon and Zamboanga del Norte while less likely for the rest of Mindanao during the forecast period.

GEFS Week-1 Exceedance Prob. > 50mm
Valid: 20220916 - 20220922



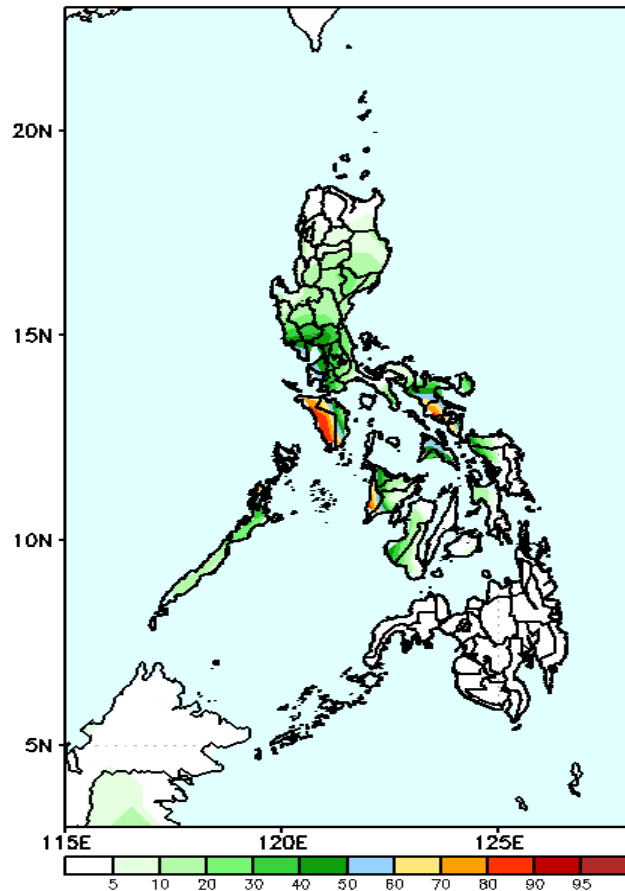
High probability of rainfall to exceed 50mm in most parts of Luzon (except northern part), Aklan and Antique while less likely for the rest of the country during the forecast period.



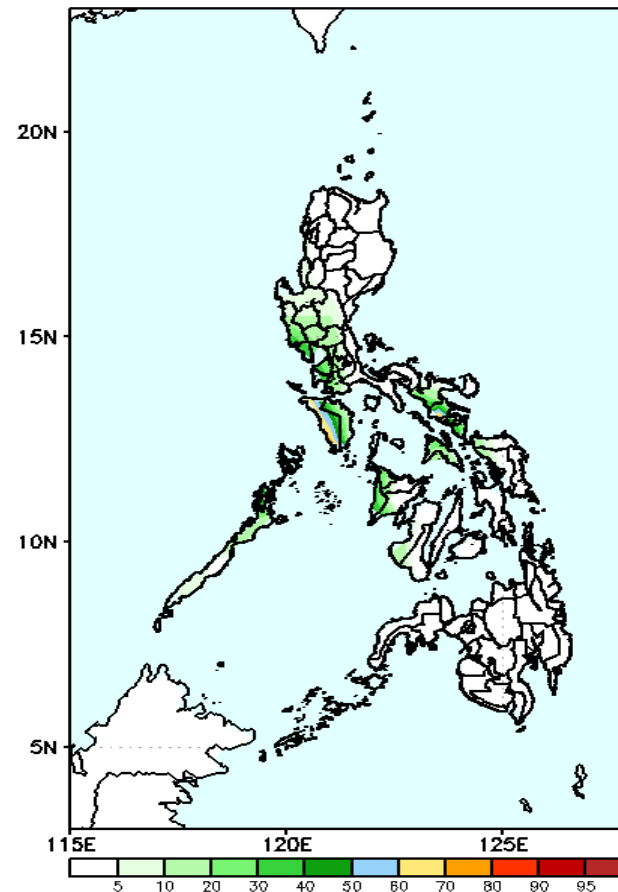
Exceedance Probability > 100/150/200 mm

Week 1: Sep 16-22, 2022

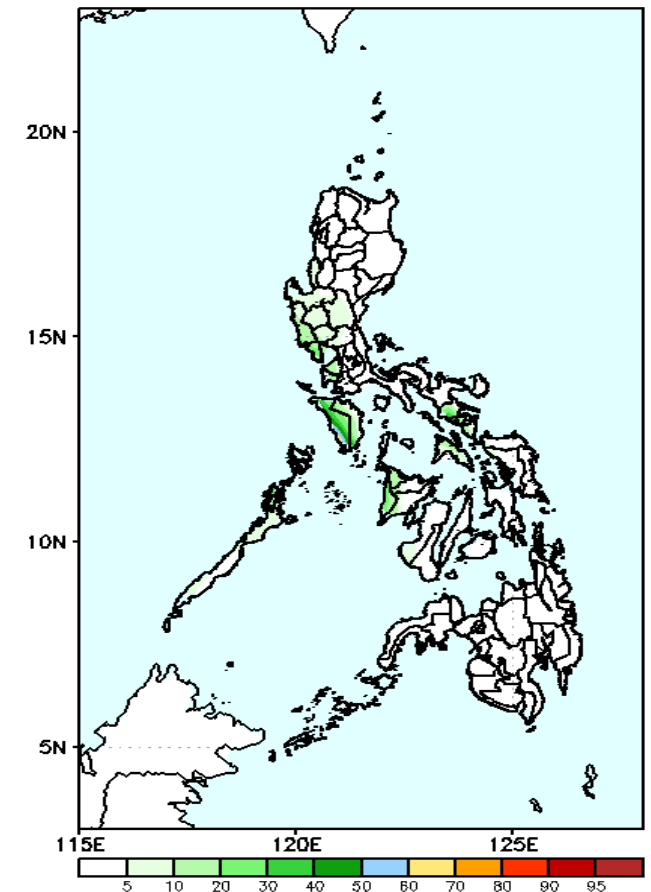
GEFS Week-1 Exceedance Prob. > 100mm
Valid: 20220916 - 20220922



GEFS Week-1 Exceedance Prob. > 150mm
Valid: 20220916 - 20220922



GEFS Week-1 Exceedance Prob. > 200mm
Valid: 20220916 - 20220922



70-90% probability of rainfall to exceed 100mm in Occidental Mindoro, Albay and Antique while less likely for the rest of the country during the forecast period.

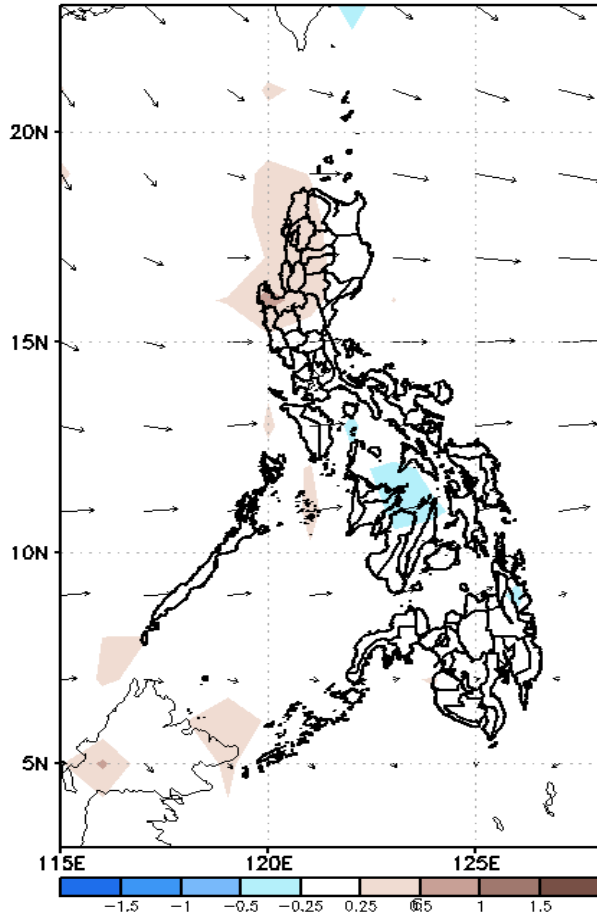
Low probability of rainfall to exceed 150mm in most parts of the country during the forecast period.

Low probability of rainfall to exceed 200mm in most parts of the country during the forecast period.

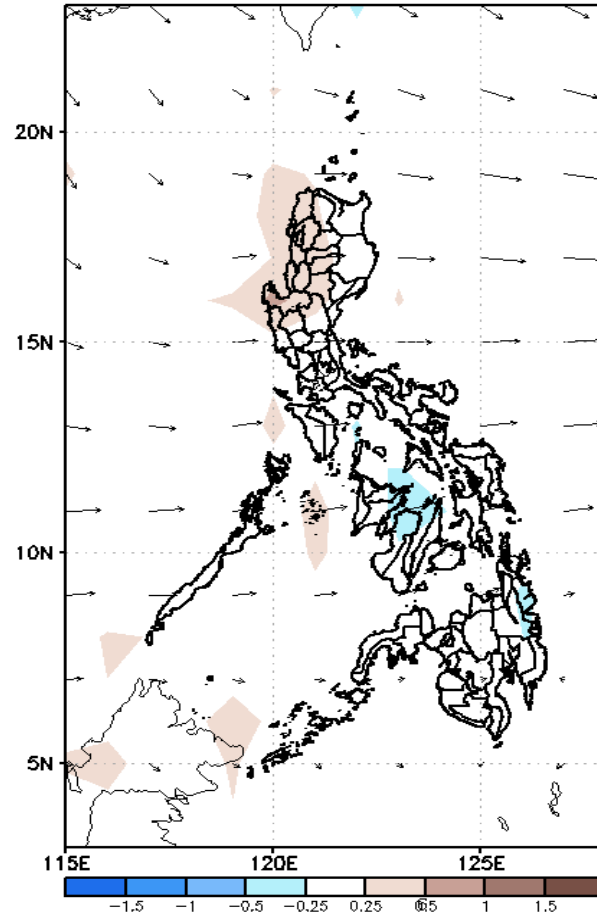
GEFS Week-2 Forecasts: Wind Anomaly Forecast

Week 2: Sep 23-29, 2022

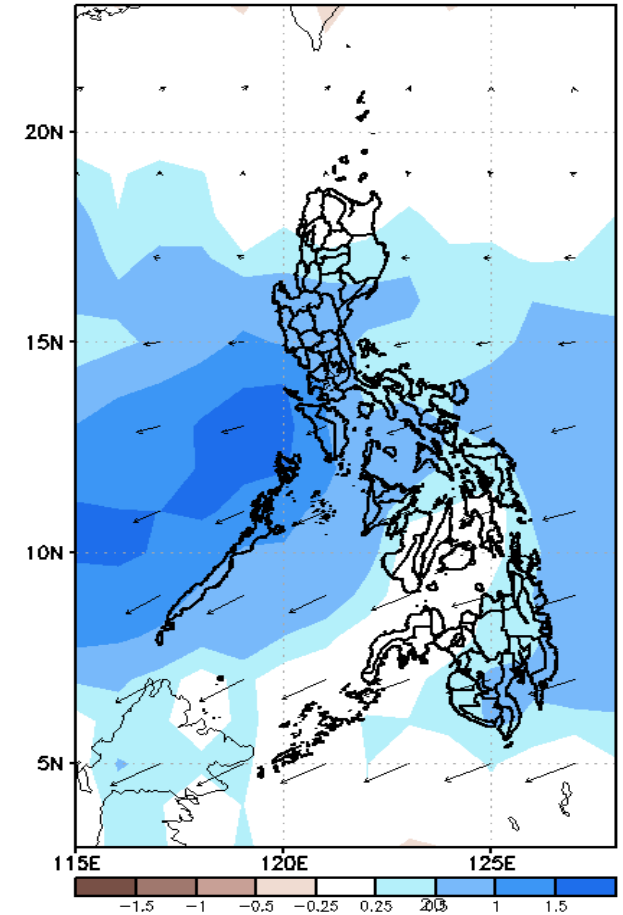
GEFS Week-2 850-hPa Divergence and Wind Anom
Valid: 20220923 - 20220929



GEFS Week-2 700-hPa Divergence and Wind Anom
Valid: 20220923 - 20220929



GEFS week-2 200-hPa Divergence and Wind Anom
Valid: 20220923 - 20220929

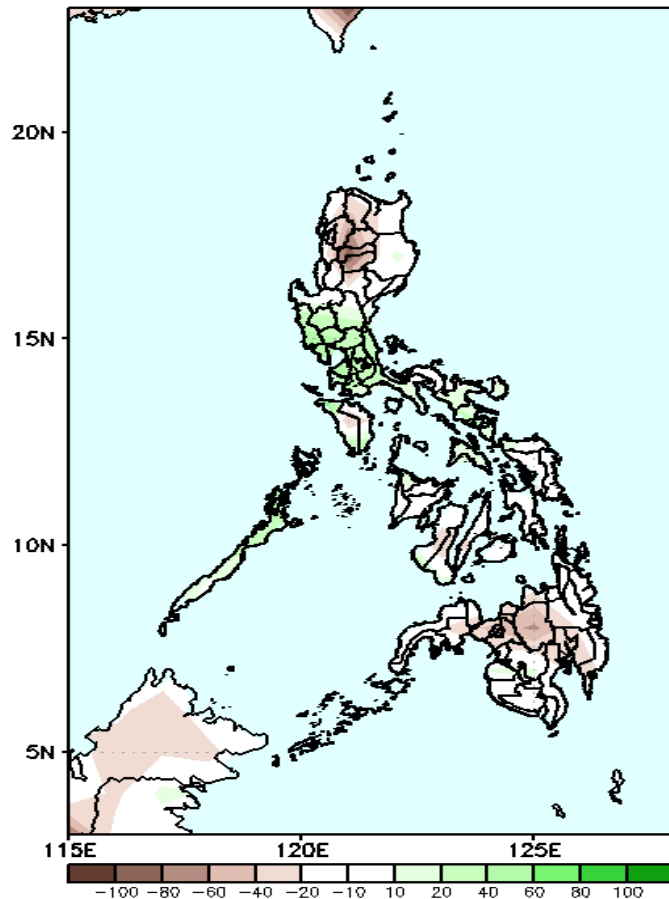


Southwest Monsoon affecting most parts of Luzon and Visayas while Easterlies affecting Mindanao during the forecast period.

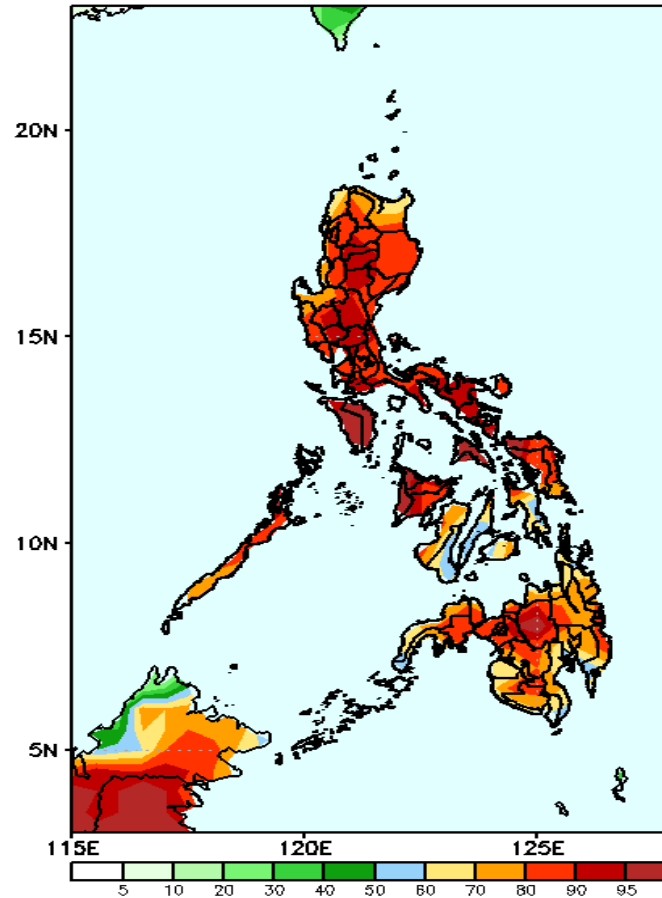
Precipitation Anomaly and Exceedance Probability > 25/50 mm

Week 2: Sep 23-29, 2022

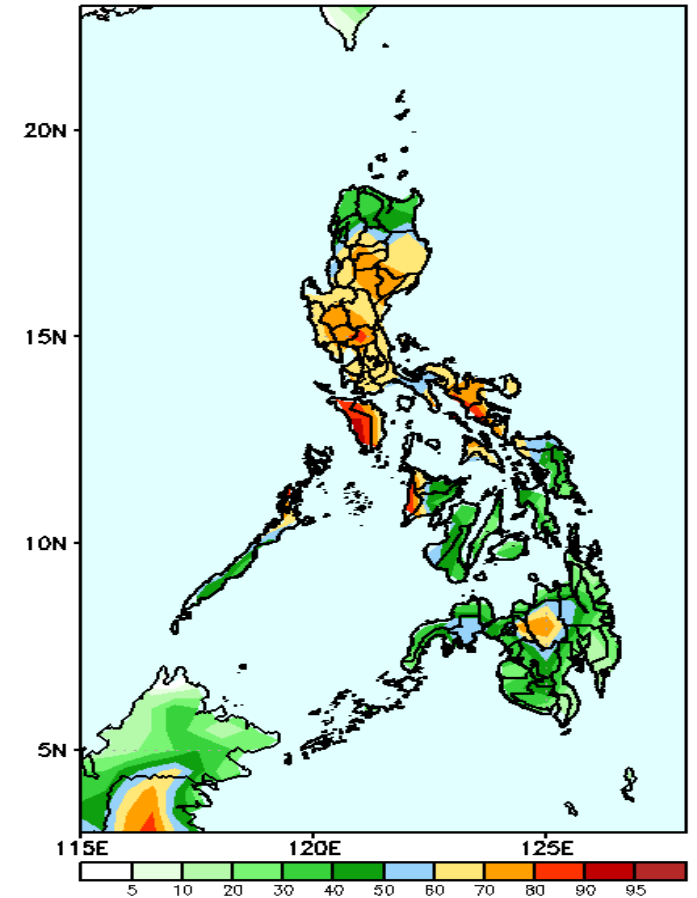
GEFS Week-2 Precip Anomaly
Valid: 20220923 - 20220929



GEFS Week-2 Exceedance Prob. > 25mm
Valid: 20220923 - 20220929



GEFS Week-2 Exceedance Prob. > 50mm
Valid: 20220923 - 20220929



Rainfall deficit of 40-80mm is expected in most parts of the country except in Central & Southern Luzon and Bicol Region where increase of rainfall of 40-60mm is more likely during the forecast period.

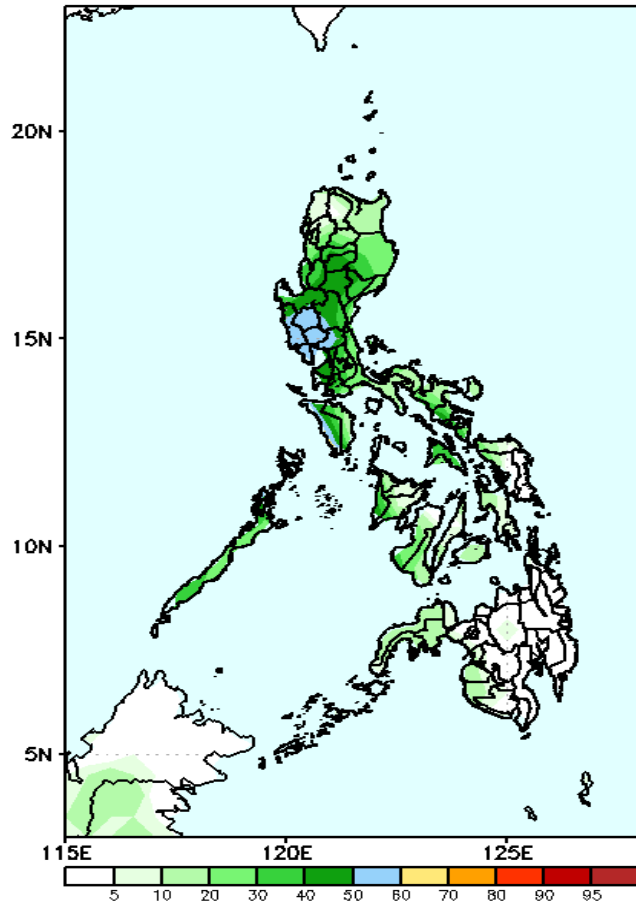
High probability of rainfall to exceed 25mm in most parts of the country during the forecast period.

High probability of rainfall to exceed 50mm in most parts of Luzon, Aklan, Antique and Bukidnon while less likely for the rest of the country during the forecast period.

Exceedance Probability > 100/150/200 mm

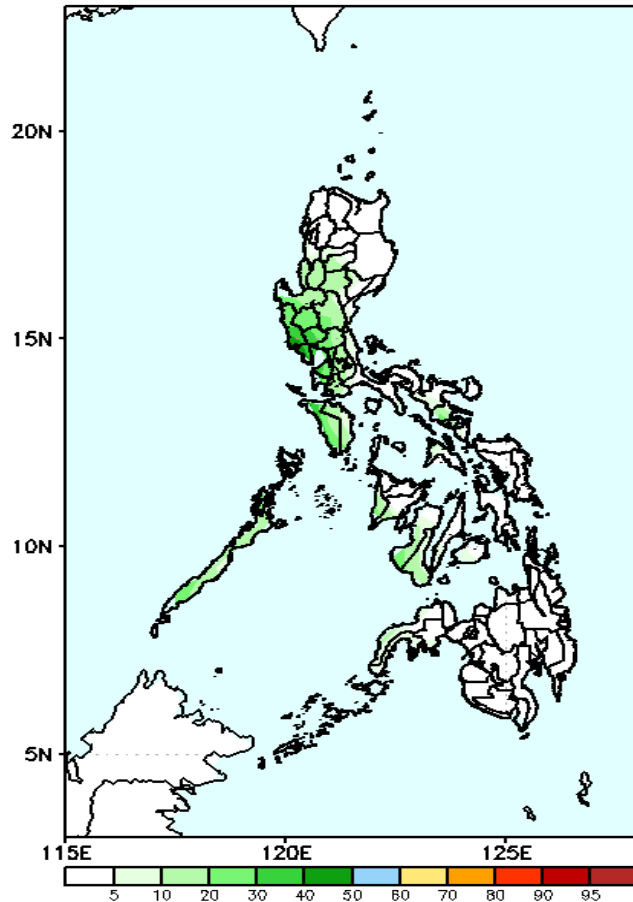
Week 2: Sep 23-29, 2022

GEFS Week-2 Exceedance Prob. > 100mm
Valid: 20220923 - 20220929



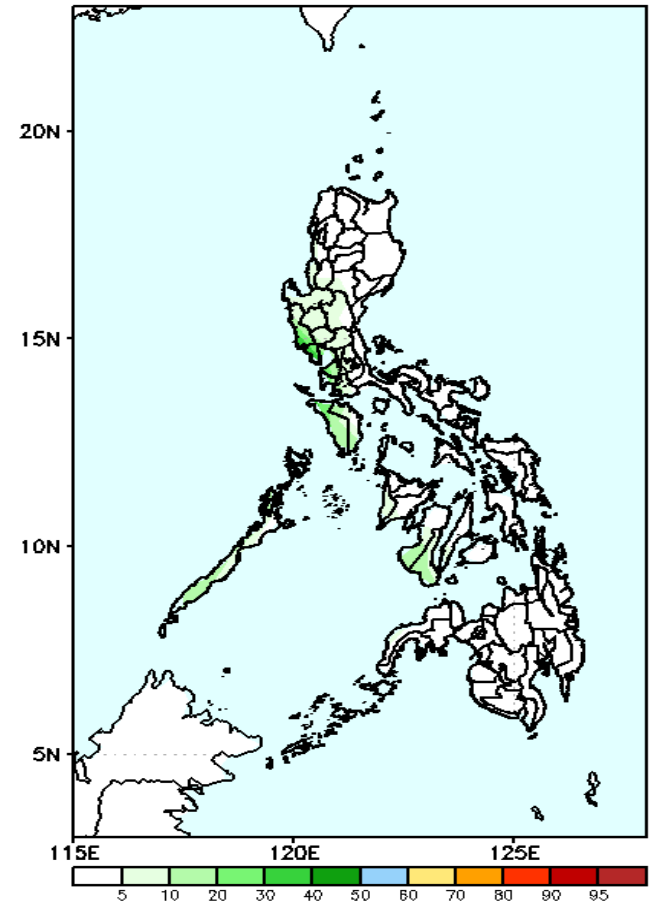
Low probability of rainfall to exceed 100mm in most parts of the country during the forecast period.

GEFS Week-2 Exceedance Prob. > 150mm
Valid: 20220923 - 20220929



Low probability of rainfall to exceed 150mm in most parts of the country during the forecast period.

GEFS Week-2 Exceedance Prob. > 200mm
Valid: 20220923 - 20220929

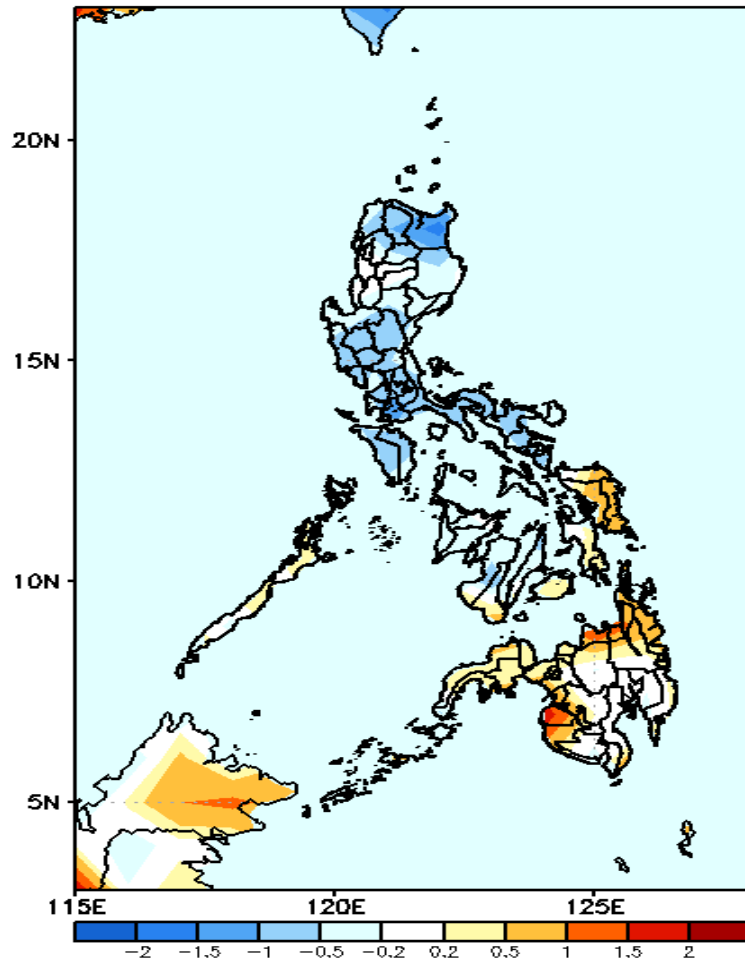


Low probability of rainfall to exceed 200mm in most parts of the country during the forecast period.



GEFS Week-1 & 2 Forecasts: T2m Anomaly

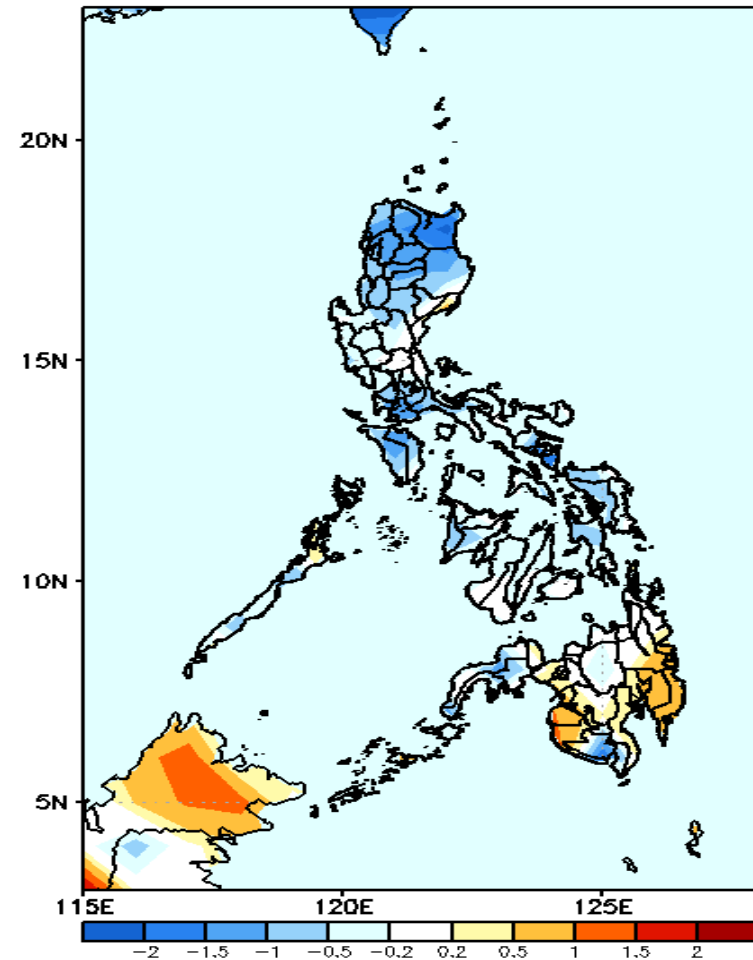
GEFS Week-1 T2m Anomaly
Valid: 20220916 - 20220922



2m Temperature Week 1: Sep 16-22, 2022

Slightly cooler than average surface air temperature will likely experience in most parts of Luzon, Western Visayas while slightly warmer to warmer than average temperature is expected in Palawan and remaining parts of Visayas and Mindanao during the forecast period.

GEFS Week-2 T2m Anomaly
Valid: 20220923 - 20220929



2m Temperature Week 2: Sep 23-29, 2022

Slightly cooler to cooler than average surface air temperature will likely experience in most parts of the country except in Davao Region, Maguindanao and Sultan Kudarat where warmer than average temperature is expected during the forecast period.